

RACV CONFERENCES AND EVENTS



AMAZING MEETINGS WITH EVEN BETTER VIEWS

MELBOURNE CBD | YARRA VALLEY | TORQUAY | MORNINGTON PENINSULA
GOLDFIELDS | INVERLOCH | NOOSA | GOLD COAST | HOBART





RACV Torquay Resort



RACV Goldfields Resort

DISCOVER THE POSSIBILITIES

Whether you're looking for ocean views, inner city energy, or privacy and tranquillity, RACV Conferences and Events can provide the perfect destination with nine properties across Victoria, Queensland and Tasmania.



RACV Cape Schanck Resort



RACV Healesville Country Club & Resort



RACV Hobart Hotel



RACV Royal Pines Resort



RACV City Club



RACV Inverloch Resort



RACV Noosa Resort



RACV CAPE SCHANCK RESORT

Located on the beautiful Mornington Peninsula and only 75-minutes from Melbourne CBD, RACV Cape Schanck Resort is unlike anything you've ever seen. Providing extensive conference and event facilities with flexible event spaces and break out areas, this state of the art facility is the perfect location for a conference, event or wedding.

CONFERENCE FACILITIES

- 10 conference rooms with natural light
- 2 pre-function areas
- Green room
- Breakout areas
- Complimentary Wi-Fi
- AV equipment

ACCOMMODATION

- 204 accommodation rooms in total
- 120 rooms and suites with ocean and/or golf views located in the main building
- 16 two and three bedroom villas
- 48 ocean view rooms
- Complimentary Wi-Fi
- Widescreen TV
- In-room media hub
- Mini bar
- 24-hour room service

DINING

- Cape – premium restaurant
- Samphire – breakfast and a la carte restaurant
- Mantellina – casual cafe / restaurant
- Bar and lounge - drinks and snacks

GUEST SERVICES

- Golf shop
- Undercover parking
- Electric car charging stations

RECREATION FACILITIES

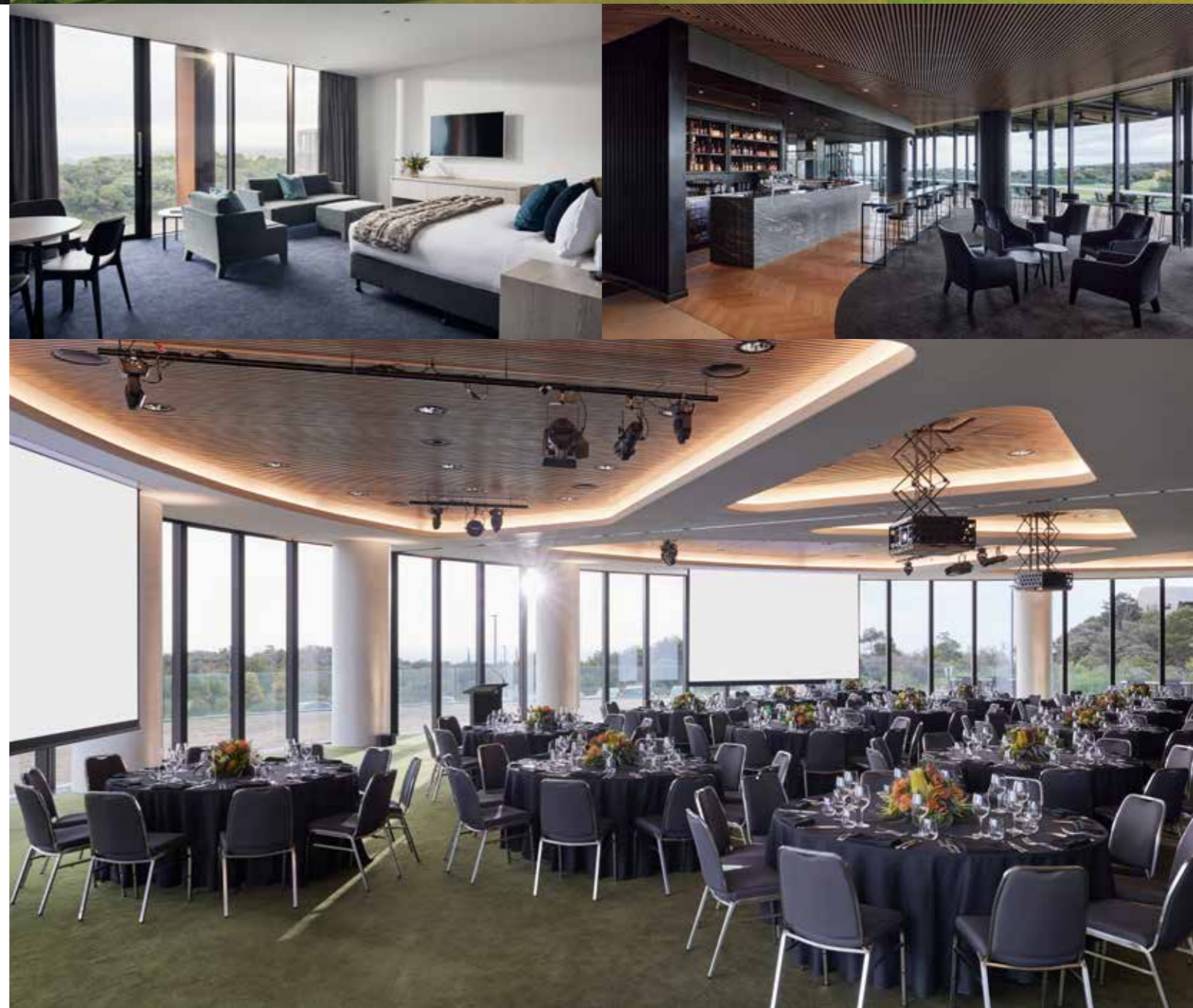
- Championship 18-hole golf course
- Practice facilities
- Floodlit tennis courts
- Gymnasium and group fitness room
- Day spa
- Driving range
- Indoor swimming pool, spa and sauna
- Games room

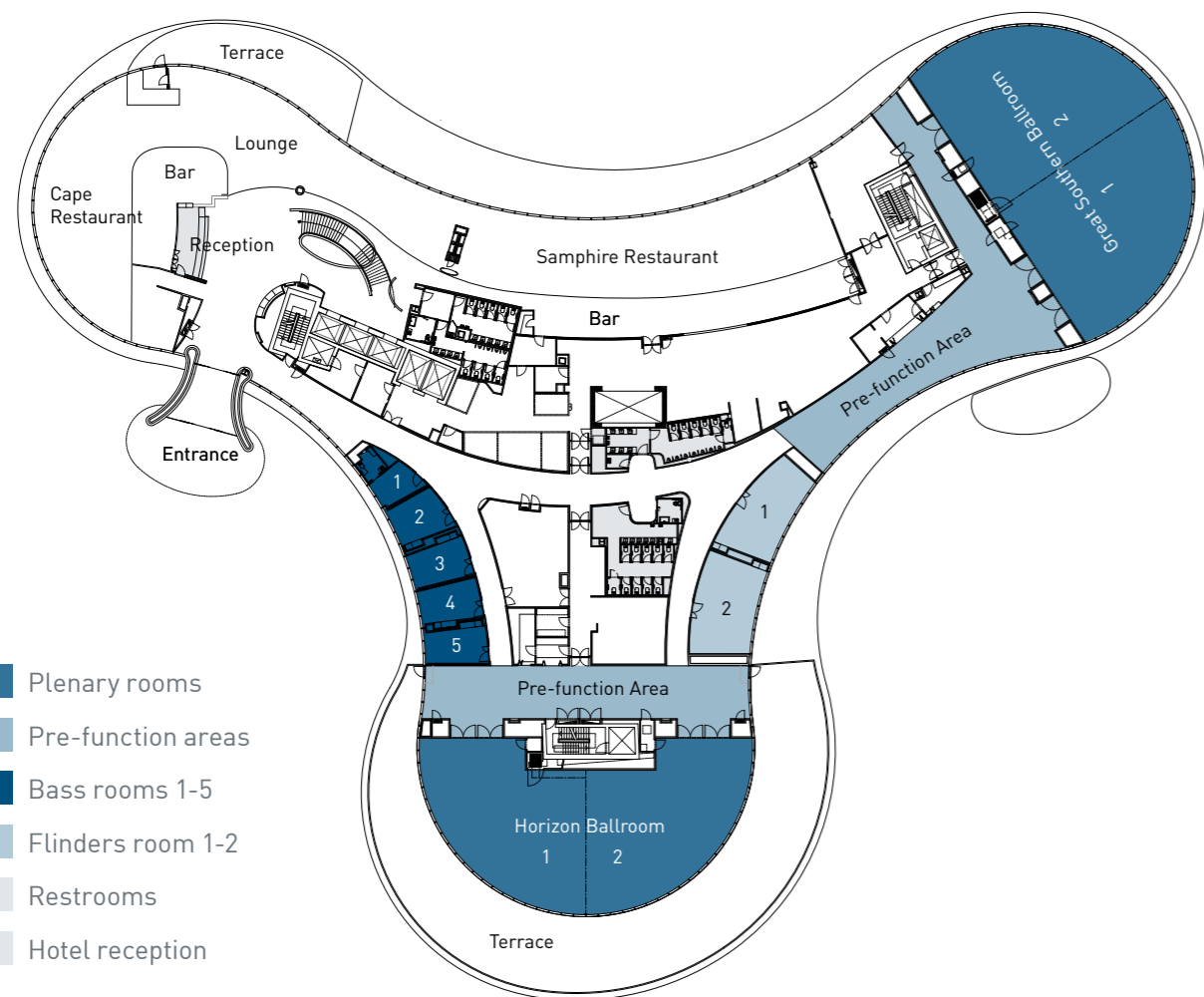
ATTRACTIONS

- Coastal walks
- World class wineries
- Hot springs and thermal bathing locations
- Horseback winery tours
- Enchanted Adventure
- Nearby markets, galleries and shopping
- On-site beach access

RACV CAPE SCHANCK RESORT

Trent Jones Drive, Cape Schanck VIC
 Telephone: +61 3 5950 8029
capeschanck_conference@racv.com.au





CAPACITIES

ROOM	AREA (m2)	COCKTAIL STYLE	BANQUET STYLE	CABARET STYLE	THEATRE STYLE	C'ROOM STYLE	B'ROOM STYLE	U SHAPE STYLE	DINNER DANCE	EXHIBITION BOOTHS (3m x 3m)
Great Southern Ballroom	483	450	300	240	450	200	220	-	240	26
GSB Pre Function Area	233	-	-	-	-	-	-	-	-	5
Great Southern Ballroom 1	241	225	150	120	225	100	85	50	110	13
Great Southern Ballroom 2	241	225	150	120	225	100	85	50	110	13
Horizon Ballroom	382	370	200	160	340	120	190	-	160	16
HB Pre Function Area	159	-	-	-	-	-	-	-	-	4
Horizon Ballroom 1	191	185	90	72	170	60	95	35	60	8
Horizon Ballroom 2	189	185	90	72	170	60	95	35	60	8
Flinders 1	48	-	30	24	40	20	20	20	-	-
Flinders 2	54	-	30	24	40	20	20	24	-	-
Bass 2-5	20	-	-	-	-	-	10	-	-	-



RACV GOLDFIELDS RESORT

RACV Goldfields Resort is one of the largest residential hotels in regional Victoria. Located on 150 acres of state forest in the heart of the goldfields, Macedon Ranges and Spa Country, it offers the perfect balance of recreation, business and entertainment, just 80 minutes from the Melbourne CBD.

CONFERENCE FACILITIES

- Capacity for 10 to 600 guests
- 12 versatile function areas
- Pillarless ballroom
- 3 secretariat rooms
- Complimentary Wi-Fi
- High-quality AV equipment with in-house technicians
- Dedicated event coordinators
- Extensive lawn areas for team building exercises

ACCOMMODATION

- 137 accommodation rooms with forest or golf views
- One and two bedroom suites available
- Complimentary Wi-Fi
- 24-hour room service
- Widescreen TV
- 24-hour reception

DINING

- Three Founders restaurant
- Bar and terrace

GUEST SERVICES

- Golf shop
- Car park
- Electric car charging stations

RECREATION FACILITIES

- 18-hole golf course
- Driving range and putting green
- Heated swimming pool and spa
- Gym
- Tennis courts
- BBQ area
- 6.3km mountain bike trails

ATTRACTIONS

- Sovereign Hill
- Ballarat
- Daylesford
- Creswick Woollen Mills
- Hepburn Springs
- Nearby markets, galleries and shops

RACV GOLDFIELDS RESORT

1500 Midland Highway, Creswick VIC
 Telephone: +61 3 5345 9600
events_goldfields@racv.com.au

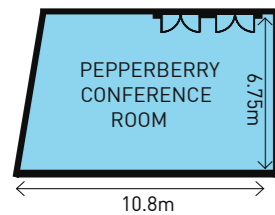


GROUND FLOOR



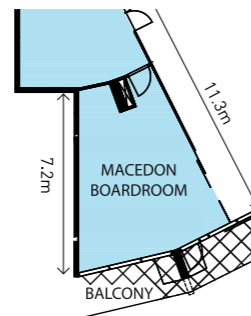
FACILITIES AND LAYOUT

RACV Goldfields Resort offers a large range of function rooms to suit any sized meeting or event. Our dedicated team delivers the perfect combination of flexibility, imagination, atmosphere and experience for your memorable event. We will coordinate the success of your event from start to finish including initial meeting, discussing room requirements, breakout facilities, catering and accommodation bookings. A variety of flexible formats, layouts and seating options allow us to tailor rooms to your exact requirements. From conferences, meetings, weddings, family celebrations, product launches, award nights and galas, every event is organised with the utmost care and attention.



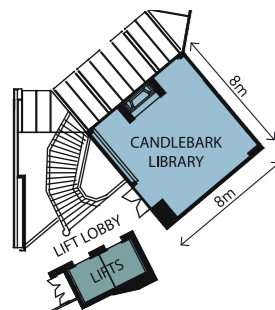
PEPPERBERRY ROOM GROUND FLOOR

Floor to ceiling windows
Large doors to terrace, gardens and large grassed area
Wireless broadband internet
Heating and air conditioning
Max 64 pax theatre style.



MACEDON ROOM LEVEL 1

Floor to ceiling windows with forest and golf course views
Access to balcony
Heating and air conditioning
Wireless broadband internet
Tele/video conferencing system
Max 12 pax boardroom style.



CANDLEBARK LIBRARY LEVEL 2

Natural light
Fireplace
Wireless broadband internet
Heating and air conditioning
Max 40 pax theatre style



SILVER GUM ROOM LEVEL 3

Natural light
Fireplace
Wireless broadband internet
Heating and air conditioning
Max 60 pax theatre style

CAPACITIES

ROOM	HEIGHT (m)	AREA (m2)	COCKTAIL STYLE	BANQUET STYLE	CABARET STYLE	THEATRE STYLE	C'ROOM STYLE	B'ROOM STYLE	U SHAPE STYLE	DINNER DANCE
Grand Ballroom	2.7-3.5	537.9	600	400	320	600	360	-	-	340
Hepburn	2.7-3.5	179.3	180	100	64	170	120	-	60	-
Creswick	2.7-3.5	179.3	180	100	64	170	120	-	60	-
Lindsay	2.7-3.5	179.3	180	100	64	170	120	-	60	-
Hepburn Foyer	3.5	132.0	180	-	-	-	-	-	-	-
Lindsay Foyer	3.5	67.1	100	-	-	-	-	-	-	-
Macedon Boardroom	3.1	36.0	-	-	-	-	-	14	-	-
Pepperberry	3.0	71.7	70	50	40	64	45	20	24	-
Candlebark Library	2.7	58.4	35	24	24	40	24	18	20	-
Silver Gum	2.7	88.2	-	24	24	60	24	18	21	-
Ironbark	3.0	103.5	100	60	48	84	60	40	35	-
Banksia	3.0	184.0	150	130	80	140	84	42	40	-

*Please note maximum capacities do not include staging or dance floor.



RACV HEALESVILLE COUNTRY CLUB & RESORT

Located in the heart the of Yarra Valley and only an hour's drive from Melbourne's CBD, RACV Healesville Country Club & Resort offers a wide selection of conference and event choices. Our property has an extensive range of facilities that will ensure you'll have everything you need to make your event a success, while you enjoy the breath-taking scenery of the Great Dividing Range.

CONFERENCE FACILITIES

- 200 seat function room
- 15 function rooms
- Outdoor terraces and balcony access
- Grand Conservatory with stunning views of Mt Riddell
- Breakout areas
- Complimentary Wi-Fi
- High-quality AV equipment

ACCOMMODATION

- 80 premium accommodation rooms
- Private balconies/patios with mountain, garden or golf course views
- Complimentary Wi-Fi
- Room service
- Widescreen TV
- 24-hour reception

DINING

- 2 restaurants
- 2 bars

GUEST SERVICES

- Undercover parking
- Lobby shop
- Electric car charging stations

RECREATION FACILITIES

- 18-hole golf course
- 4-hole short course
- 4 tennis courts, 2 floodlit for night games
- Gym
- Day spa
- Indoor swimming pool
- Spa, sauna and steam room
- Bowling green
- Croquet lawn
- Bocce court

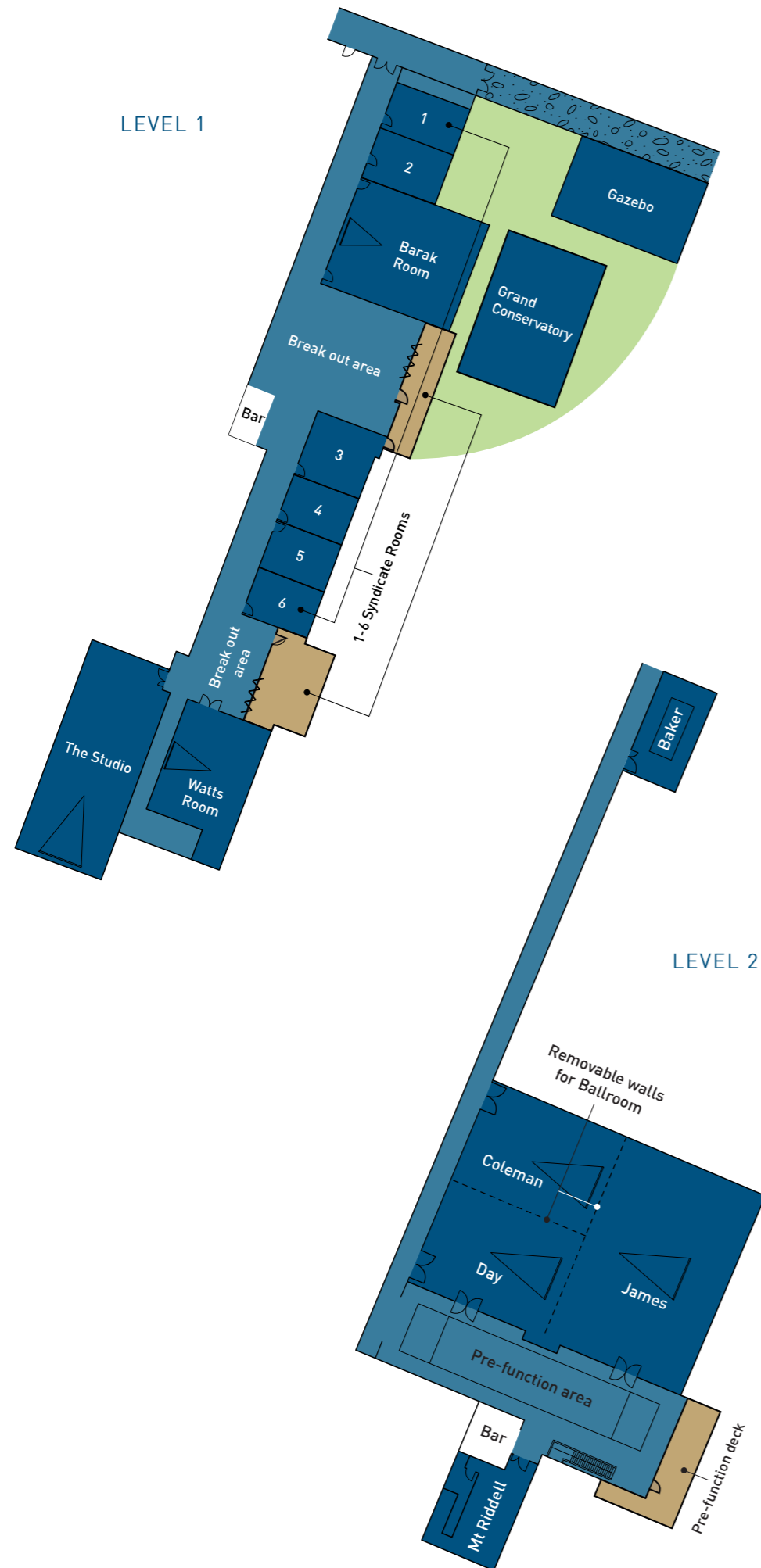
ATTRACTIONS

- Walking trails- National Parks Badgers Weir and Centennial Trail Donnelly's Weir
- Healesville Sanctuary
- Hot air balloon flights
- Four Pillars gin distillery
- Payten & Jones winery
- Watts River Brewery
- TarraWarra Museum of Art

RACV HEALESVILLE COUNTRY CLUB & RESORT

122 Healesville-Kinglake Road, Healesville VIC
 Telephone: 03 5969 9462
healesvilleevents@racv.com.au





CAPACITIES

ROOM	HEIGHT (m)	AREA (m2)	COCKTAIL STYLE	BANQUET STYLE	CABARET STYLE	THEATRE STYLE	C'ROOM STYLE	B'ROOM STYLE	U SHAPE STYLE	DINNER DANCE
Ballroom James / Day / Coleman	3.7	400	320	240	196	320	150	52	63	220
James	3.7	204	160	120	84	180	75	30	33	100
Day or Coleman	3.7	98	70	60	42	70	32	22	21	40
Baker	2.7	38	-	-	-	-	-	14	-	-
Mt Riddell	2.7	26	-	-	-	-	-	6	-	-
Watts	2.7	73	60	50	35	70	32	22	21	40
Barak	2.7	95	70	60	42	96	45	28	24	50
Syndicate 1	2.7	26	-	-	-	18	12	11	9	-
Syndicate 2	2.7	22	-	-	-	12	-	8	6	-
Syndicate 3	2.7	34	-	-	-	18	12	11	11	-
Syndicate 4	2.7	24	-	-	-	12	-	8	6	-
Syndicate 5	2.7	24	-	-	-	12	-	8	6	-
Syndicate 6	2.7	24	-	-	-	12	-	8	6	-
Gazebo	2.76	64	40	20	-	-	-	-	-	-
Grand Conservatory	2.4	210	100	80	-	-	-	-	-	60



RACV INVERLOCH RESORT

Nestled in the heart of Victoria's spectacular South Gippsland coast, with sweeping views of Bass Strait and Anderson Inlet, is RACV Inverloch Resort. This stunning property provides the perfect venue for events both large and small.

CONFERENCE FACILITIES

- 200 seated banquet room with multiple configurations available
- 2 ocean-view boardrooms. Can be combined to accommodate 20 guests
- Break-out rooms
- Complimentary Wi-Fi
- High-quality AV equipment

ACCOMMODATION

- 25 resort rooms
- 26 ocean-view rooms
- 20 two and three bedroom villas
- 20 two bedroom deluxe cabins
- Complimentary Wi-Fi
- Widescreen TV
- Room service

DINING

- Restaurant
- Lounge bar
- Outdoor BBQ

GUEST SERVICES

- Lobby shop
- Car parking
- Electric car charging stations

RECREATION FACILITIES

- Indoor swimming pool
- Spa
- Sauna
- Tennis courts
- Gym
- Games room
- Walking trails

ATTRACTIONS

- Leongatha 18-hole golf course
- Wineries
- Anderson Inlet beach
- Bunurong Coast Marine Park
- Nearby markets, galleries and shops
- State Coal Mine
- Wilsons Prom day trips
- Prom Country Cheeses

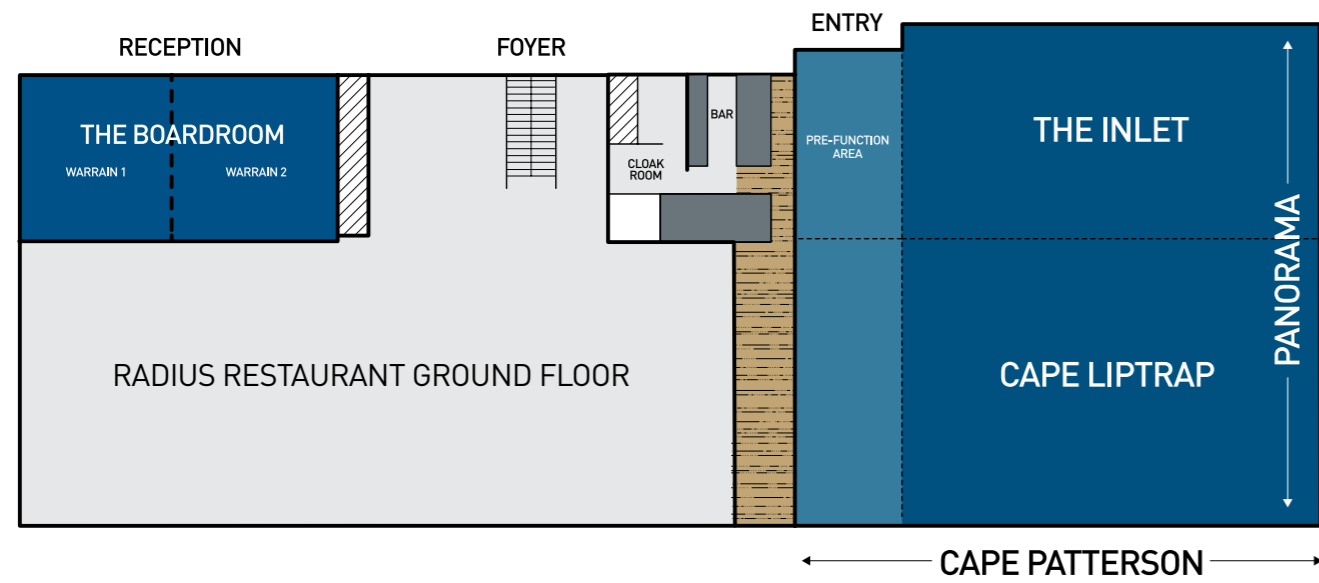
RACV INVERLOCH RESORT

70 Cape Paterson-Inverloch Road, Inverloch VIC
 Telephone: +61 3 5674 0000
inverlochevents@racv.com.au





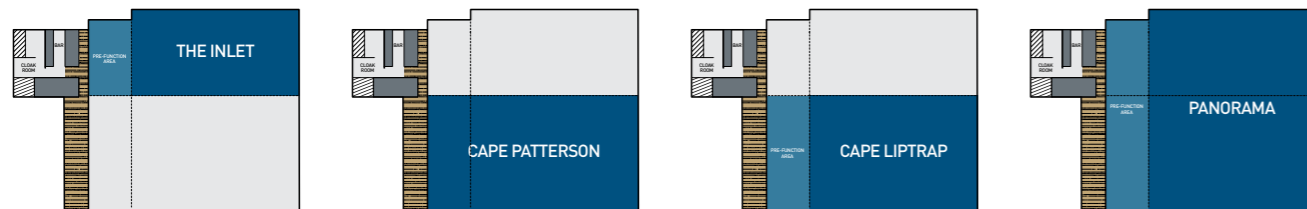
LEVEL 1



CAPACITIES

ROOM	HEIGHT (m)	AREA (m2)	COCKTAIL STYLE	BANQUET STYLE	CABARET STYLE	THEATRE STYLE	C'ROOM STYLE	B'ROOM STYLE	U SHAPE STYLE	DINNER DANCE
The Inlet	3.5	116	100	60	42	120	60	40	35	-
Cape Liptrap	3.5	152	160	90	63	160	80	50	40	-
Cape Paterson	3.5	200	180	120	84	200	100	60	50	-
Panorama	3.5	352	280	200	140	250	150	80	60	180
Warrain 1	2.9	30	-	-	-	-	-	10	-	-
Warrain 2	2.9	30	-	-	-	-	-	10	-	-
Recreation Room	2.9	122	50	30	-	40	30	20	20	-
The Boardroom	2.9	60	-	20	-	-	-	20	-	-

Main plenary room is a flexible event space that can be divided into multiple spaces forming the below room configurations





RACV TORQUAY RESORT

At the gateway to one of the world's most stunning coastal drives, RACV Torquay Resort, is a 75 minute trip from Melbourne's CBD and only 40 minutes from Avalon Airport. Perched between the beautiful Torquay and Jan Juc beaches, the resort is set on an expansive golf course with spectacular ocean views and easy beach access.

CONFERENCE FACILITIES

- 10 versatile function areas for up to 410 people
- 340 seat pillarless ballroom
- 3 pre-function areas
- Private outdoor terrace
- Complimentary Wi-Fi
- High-quality AV equipment
- Dedicated event coordinators

ACCOMMODATION

- 92 accommodation rooms with ocean or golf views
- Complimentary Wi-Fi
- Widescreen TV
- 24-hour room service
- 24-hour reception

DINING

- Restaurant
- Bistro
- Bar

GUEST SERVICES

- Lobby shop
- Undercover parking
- Golf shop
- Electric car charging stations

RECREATION FACILITIES

- 18-hole golf course
- Day spa
- Gym
- Indoor swimming pool
- Spa
- Sauna
- Floodlit tennis courts
- Games room with pool table, table tennis and arcade games

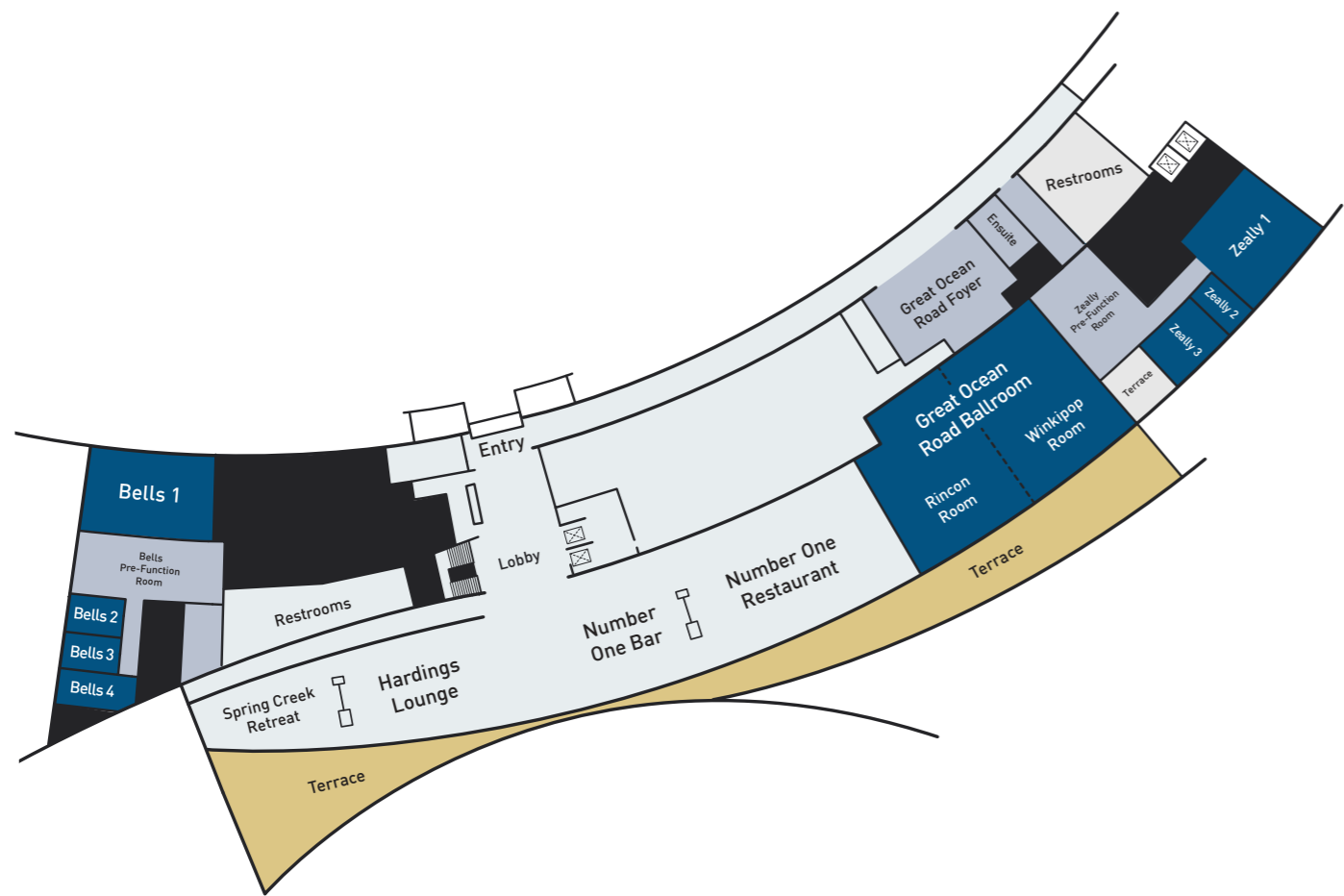
ATTRACTIONS

- Beaches
- Wineries
- Walking trails
- Great Otway National Park
- Nearby coastal townships

RACV TORQUAY RESORT

1 Great Ocean Road, Torquay VIC
 Telephone: +61 3 5261 1600
events_torquay@racv.com.au





CAPACITIES

ROOM	HEIGHT (m)	AREA (m2)	COCKTAIL STYLE	BANQUET STYLE	CABARET STYLE	THEATRE STYLE	C'ROOM STYLE	B'ROOM STYLE	U SHAPE STYLE	DINNER DANCE
Great Ocean Road Ballroom	3.2 - 4.3	474	410	270	216	340	220	-	-	240
Rincon Room	3.2 - 4.3	233	150	110	80	140	100	-	-	80
Winkipop Room	3.2 - 4.3	240	170	120	88	150	110	-	-	90
Zeally Room 1	3.4	135	100	90	56	96	60	36	30	-
Zeally Room 2	3.4	24	-	-	-	-	-	10	-	-
Zeally Room 3	3.4	48	-	-	16	30	-	20	20	-
Bells Room 1	3.4	114	80	50	40	72	45	36	25	-
Bells Room 2	3.4	27	-	-	-	-	-	10	-	-
Bells Room 3	3.4	27	-	-	-	-	-	10	-	-
Bells Room 4	3.4	37	-	-	-	-	-	14	-	-

*Please note maximum capacities do not include staging or dance floor.



RACV CITY CLUB

Located in the heart of Melbourne's CBD, RACV City Club offers over a century of tradition and experience. In addition to the superb conference and event facilities, guests staying in-house have access to a variety of dining options, a fitness centre, swimming pool, squash courts and a day spa.

CONFERENCE FACILITIES

- 500 seat function room
- 260 seat Club Pavilion
- 70 seat Tarrant Room
- 31 seat luxury theatrette
- 20 seat intimate wine cellar
- 7 multi-configurable meeting rooms
- 200 seat cocktail bar
- Outdoor terraces with spectacular views
- Complimentary Wi-Fi
- High-quality AV equipment with on-site technicians

ACCOMMODATION

- 136 elegant rooms and suites
- 24-hour room service
- Widescreen TV
- Broadband internet access

DINING

- 8 restaurants and bars
- 2 private dining rooms

GUEST SERVICES

- Fully-equipped Shared Working Space
- Valet parking
- 460 undercover car spaces
- Electric car charging stations

RECREATION FACILITIES

- Gym
- Day spa
- Indoor swimming pool
- Steam room
- Sauna
- Squash courts
- Billiards room
- Library

ATTRACTIONS

- Cooking Master Class
- Behind the scenes tour of our 6 kitchens with our Executive Chef
- Billiards, Snooker or Pool lesson with our resident professional
- Close to city shopping, theatres, public transport and sporting venues
- Tours of the MCG and Queen Victoria Market
- Eureka Skydeck
- Melbourne Star Observation Wheel
- Yarra River Cruises

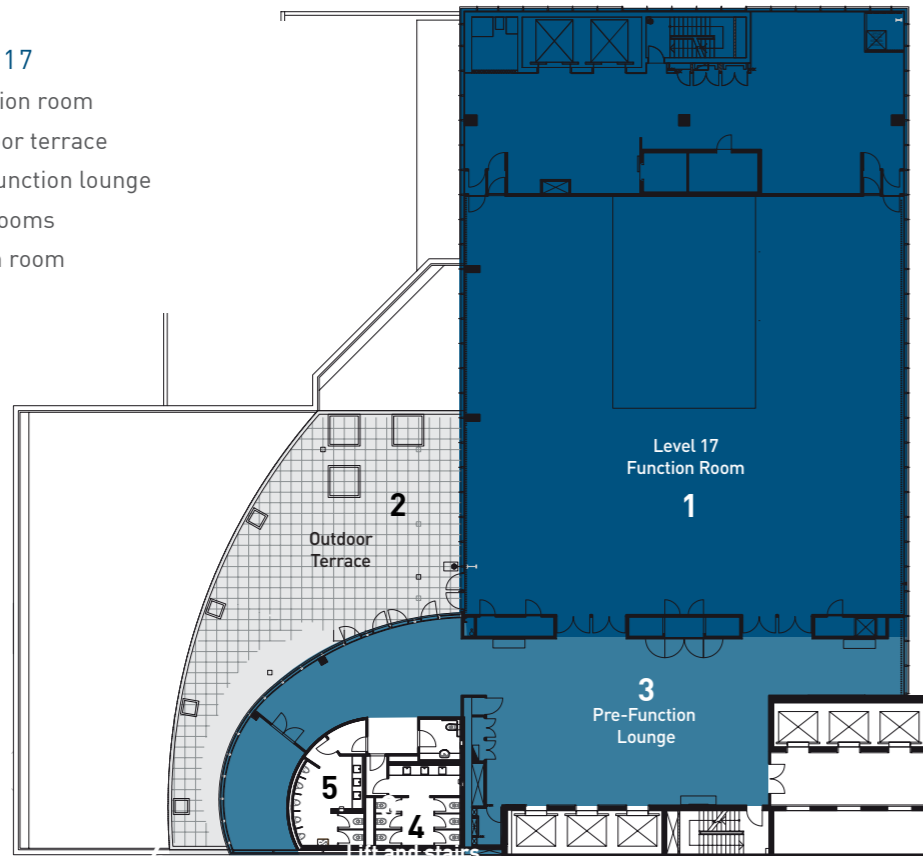
RACV CITY CLUB

501 Bourke Street, Melbourne, VIC 3000
 Telephone: 1300 139 059
conferencesandevents@racv.com.au



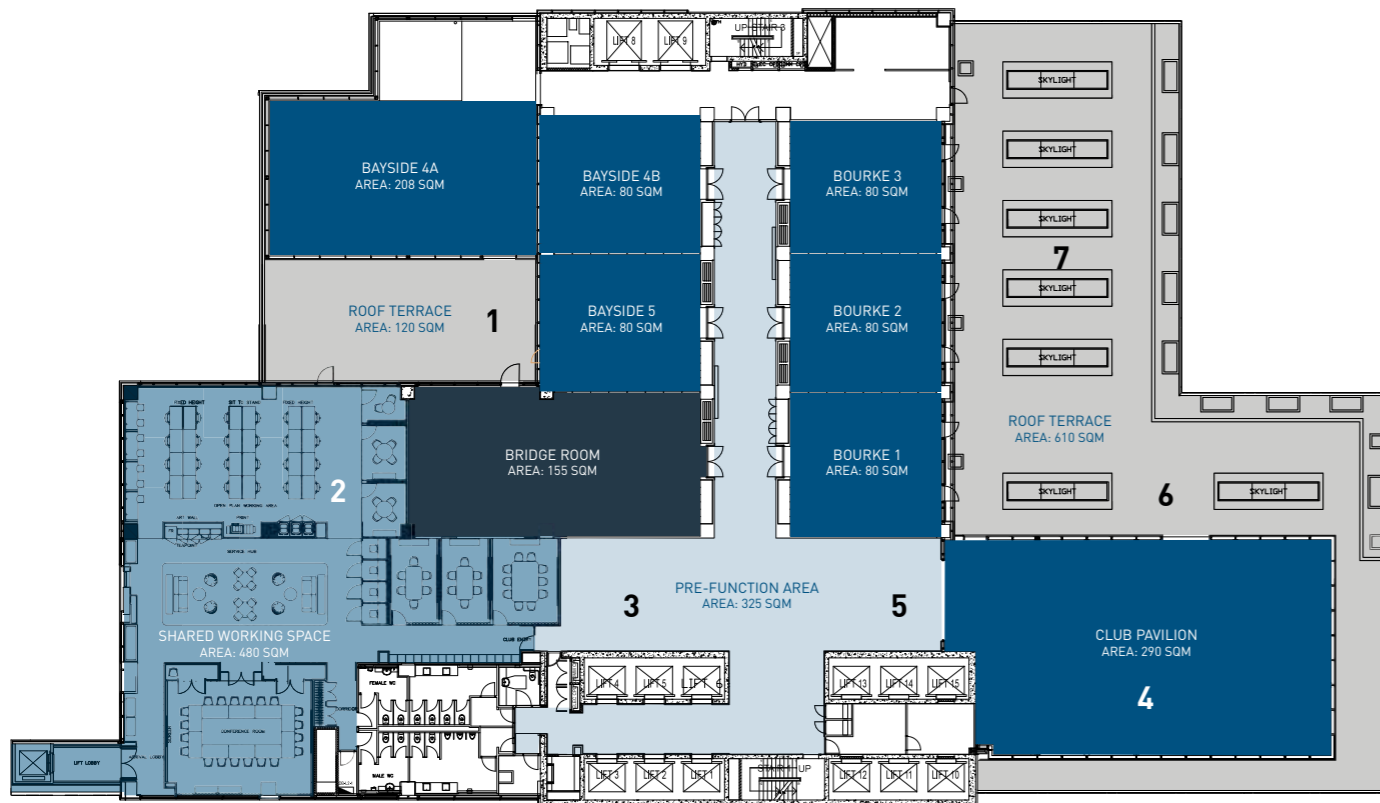
LEVEL 17

1. Function room
2. Outdoor terrace
3. Pre-function lounge
4. Restrooms
5. Green room



CAPACITIES

ROOM	HEIGHT (m)	AREA (m2)	COCKTAIL STYLE	BANQUET STYLE	CABARET STYLE	THEATRE STYLE	C'ROOM STYLE	B'ROOM STYLE	U SHAPE STYLE	DINNER DANCE	EXHIBITION BOOTHS (3m x 2.5m)
Level 17 Function Room	5	593	500	400	288	500	228	-	-	350	24
Level 17 Pre-function Lounge	-	-	200	-	-	-	-	-	-	-	-
Level 2 Bayside Room 4	3.5	250	190	80	64	120	54	48	-	-	-
Level 2 One Room	3.5	80	60	50	40	60	36	18	24	-	-
Level 2 Two Rooms	3.5	158	140	100	80	120	84	54	48	60	-
Level 2 Three Rooms	3.5	229	200	150	120	180	120	72	72	100	-
Club Pavilion	3	228.8	200	120	96	260	102	-	54	100	-
Tarrant Room	-	-	80	70	48	80	48	34	39	50	-
Theatrette	3.25	58	-	-	-	31	-	-	-	-	-
Wine Cellar	2.4	73	20	-	-	-	-	20	-	-	-



LEVEL 2

1. Outdoor Bayside Terrace
2. Shared Working Space
3. Pre-function breakout area
4. Club Pavilion
5. Club Pavilion Pre-Function Area
6. Outdoor Club Pavilion Terrace
7. Outdoor Bourke Terrace



RACV HOBART HOTEL

In the centre of Hobart's cultural precinct, near Constitution Dock and Salamanca place, is the stylish and elegant RACV Hobart Hotel. A brilliant combination of historic buildings and contemporary design, it can accommodate events for up to 220 guests.

CONFERENCE FACILITIES

- 220 seated conference or 120 seated banquet room
- Range of flexible room set-ups
- Pre-function area with natural light
- Complimentary Wi-Fi
- High-quality AV equipment

ACCOMMODATION

- 125 accommodation rooms overall
- 70 standard hotel room
- 45 apartment style rooms
- 10 premium apartments
- Complimentary Wi-Fi
- Widescreen TV
- Lifestyle Panel

DINING

- Charcoal Restaurant
- Cascade on Collins

GUEST SERVICES

- Undercover Parking for In-house guests
- Electric car charging stations

RECREATION FACILITIES

- 24 hour Gymnasium

ATTRACTIONS

- MONA art gallery
- Salamanca market
- Mt Field bushwalking
- Mt Wellington
- Constitution dock
- Nearby markets, galleries and shops



RACV HOBART HOTEL

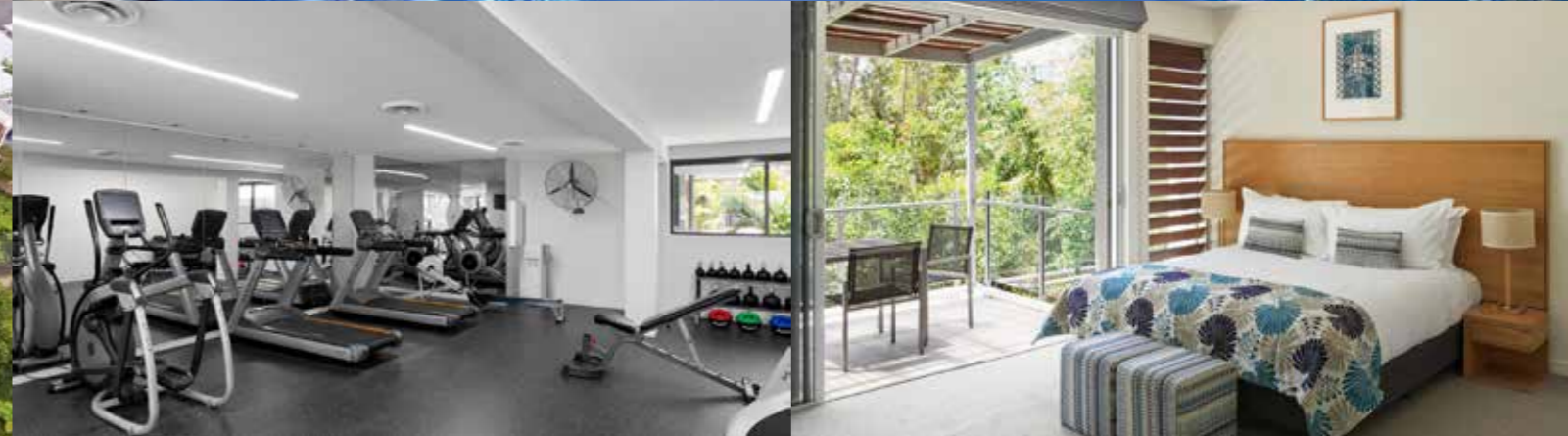
154-156 Collins Street, Hobart TAS
 Telephone: +61 3 6270 8600
 events_hobart@racv.com.au



CAPACITIES

ROOM	HEIGHT (m)	AREA (m2)	COCKTAIL STYLE	B'ROOM STYLE	C'ROOM STYLE	THEATRE STYLE	U SHAPE STYLE	CABARET STYLE	BANQUET STYLE	BANQUET W/ DANCE FLOOR	BANQUET W/ HEAD TABLE	BANQUET W/ DANCE FLOOR & HEAD TABLE
Collins Room	2.7	205	220	60	80	140	40	110	120	110	120	100
The Stables	2.65	127	110	30	38	120	25	64	80	60	70	60
Boardroom	2.6	45	-	16	-	-	-	-	-	-	-	-
Executive Lounge	2.6	70	35	12	-	-	-	-	-	-	-	-

*Please note maximum capacities do not include staging or dance floor.



RACV NOOSA RESORT

Situated on Queensland's Sunshine Coast and overlooking a pristine wetlands sanctuary, RACV Noosa Resort is just 30 minutes' drive from Sunshine Coast Airport and 90 minutes from Brisbane Airport. It provides a secluded and relaxed location for your event, while still being close to Noosa's iconic Hastings Street, pristine beach and national park.

CONFERENCE FACILITIES

- 150 seat ballroom
- 4 versatile meeting rooms
- Alfresco and undercover break-out areas
- Complimentary Wi-Fi

ACCOMMODATION

- 338 bedrooms and bathrooms consisting of;
- 24 one bedroom suites
 - 30 one bedroom apartments
 - 54 two bedroom, two bathroom apartments
 - 24 three bedroom, three bathroom apartments
 - 26 three bedroom villas
 - 13 three bedroom luxury enclave villas
 - Complimentary Wi-Fi
 - Widescreen TV
 - Foxtel
 - Room service

DINING

- Restaurant
- Bar
- Pizzeria

GUEST SERVICES

- Lobby shop
- Complimentary car parking
- Complimentary shuttle bus to Hastings Street
- Electric car charging stations

RECREATION FACILITIES

- Gym
- Day spa
- Heated swimming pool
- Floodlit tennis courts
- Bike hire

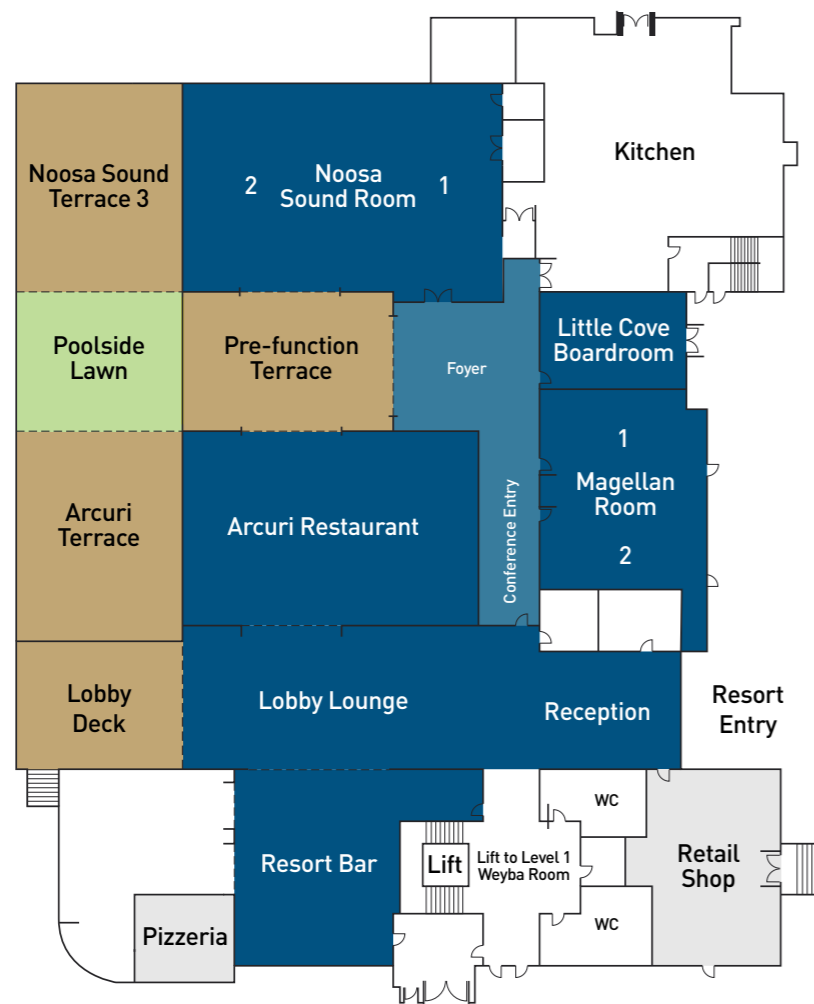
ATTRACTIONS

- Walking trails
- Beach
- National parks
- Fraser Island
- Australia Zoo
- Nearby markets, galleries and shops



RACV NOOSA RESORT

94 Noosa Drive, Noosa Heads QLD
 Telephone: 1300 273 962
 eventsnoosa@racv.com.au



CAPACITIES

ROOM	HEIGHT (m)	AREA (m2)	LONG TABLES	COCKTAIL STYLE	BANQUET STYLE	CABARET STYLE	THEATRE STYLE	C'ROOM STYLE	B'ROOM STYLE	U SHAPE STYLE
Noosa Sound 1	2.7	91	-	-	60	48	60	36	28	33
Noosa Sound 2	2.7	91	-	-	60	48	60	36	28	33
Noosa Sound 3	2.7	71	-	50	60	35	50	24	24	21
Noosa Sound 1 & 2	2.7	182	-	200	120	98	150	72	-	-
Noosa Sound Whole (1, 2 & 3)	2.7	253	-	250	170	133	200	-	-	-
Magellan 1	2.7	49.5	-	-	24	21	30	18	16	16
Magellan 2	2.7	49.5	-	-	24	21	30	18	16	16
Magellan 1 & 2	2.7	99	-	-	60	42	60	24	20	18
Weyba Room	2.7	86	-	-	48	42	50	27	24	24
Little Cove	2.7	37.5	-	-	-	-	-	12	18	16
Indoor Terrace	2.7	86.5	-	150	60	-	50	-	-	-
Arcuri Restaurant	2.7	118	100	200	-	-	-	-	-	-
Acuri Terrace	2.7	90	44 (4 tables 11 pax)	50	-	-	-	-	-	-



RACV ROYAL PINES RESORT

In the heart of Queensland's Gold Coast, midway between the beaches of Surfers Paradise and the rainforests of the hinterland, sits RACV Royal Pines Resort. Only an hour from Brisbane Airport and just 25 minutes from Gold Coast Airport, the resort can cater for the largest of events; up to 1500 guests.

CONFERENCE FACILITIES

- 1500 seated conference venue or 880 seated banquet with multiple configurations available
- Ballroom with state of the art 24 metre wide LED screen
- 15 versatile function rooms
- 8 meeting rooms with floor to ceiling windows
- Undercover tennis courts for unique dining events
- Complimentary Wi-Fi
- State of the art audio visual company with on-site technicians

ACCOMMODATION

333 Accommodation rooms consisting of:

- 42 Mountain View rooms
- 36 Deluxe Mountain View rooms
- 154 Superior rooms (60 King & 94 twin)
- 37 Spa Suites
- 3 Family Suites
- 48 Executive rooms
- 9 Executive Spa Suites
- 3 Executive Suites
- 1 Torquay Suite
- Complimentary WiFi
- Widescreen TV
- Mini bar fridge
- Room service
- 24-hour reception

DINING

- 8 restaurants and bars

GUEST SERVICES

- Golf and Lobby shop
- Car parking with electric car charging stations

RECREATION FACILITIES

- 27-hole golf course including championship course
- Driving range
- Waterpark
- Floodlit, undercover tennis courts
- Gym
- Day spa
- Large tropical swimming pool and spa
- Expansive lawn areas for team building

ATTRACTIONS

- Private golf tuition
- Gold Coast Theme Parks
- Wildlife sanctuary
- Rainforest
- Q1 observation deck
- Cruises and jet boats
- Carrara stadium

RACV ROYAL PINES RESORT

Ross Street, Benowa, Gold Coast, QLD 4217
 Telephone: +61 7 5597 8700
 royalpines_sales@racv.com.au



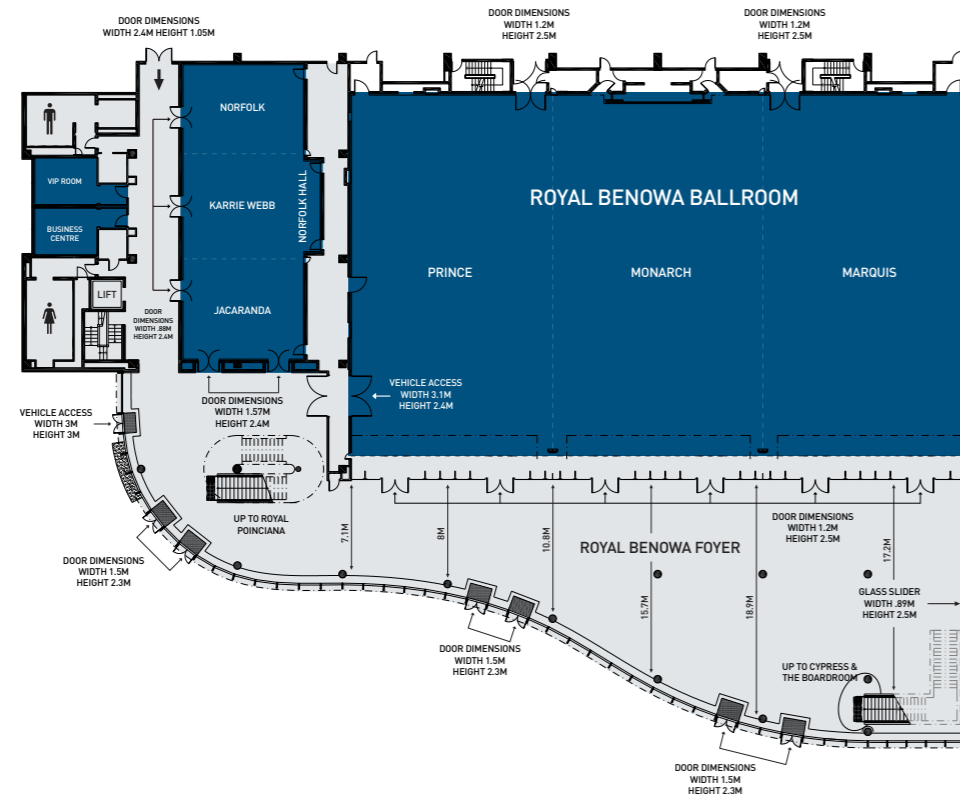
FACILITIES AND LAYOUT

RACV Royal Pines Resort has a range of rooms to suit any sized meeting or event. Our dedicated team will coordinate the success of your event from start to finish including meeting room requirements, breakout facilities, catering and accommodation bookings.

A variety of flexible formats / layouts and seating options allow us to tailor rooms to your exact requirements. At RACV Royal Pines Resort, your event is only limited by your imagination. Conferencing facilities are spread over two levels and can be broken up into 15 meeting rooms across three main sections.



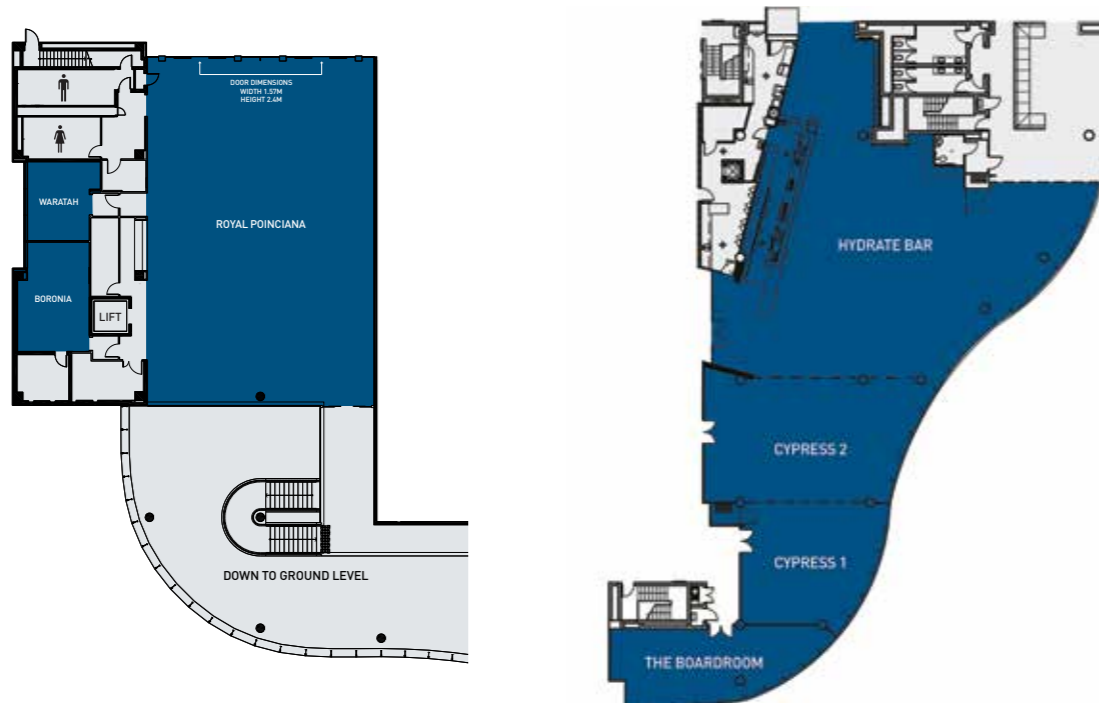
GROUND LEVEL



CAPACITIES

ROOM	DIMENSIONS (m x m)	HEIGHT (m)	AREA (m ²)	COCKTAIL STYLE	BANQUET STYLE	CABARET STYLE	THEATRE STYLE	C'ROOM STYLE	B'ROOM STYLE	U SHAPE STYLE
Royal Benowa Foyer	-	9.3	1000	1000	450	240	-	-	-	-
Royal Benowa Ballroom (Prince, Monarch, Marquis)	50 x 30	7.7	1500	1500	880	760	1540	972	-	-
Prince	16 x 30	7.7	480	400	280	224	447	276	-	90
Monarch	17 x 30	8.15	510	400	320	256	531	294	-	90
Marquis	16 x 30	7.7	480	400	280	224	447	276	-	90
Norfolk Hall (Norfolk, Karrie Webb, Jacaranda)	10 x 24	4.9	240	200	150	120	200	156	-	-
Norfolk	10 x 7	4.9	70	70	40	32	50	36	21	24
Karrie Webb	11 x 9	4.9	99	90	50	32	60	45	21	24
Jacaranda	10 x 8	4.9	80	70	40	32	50	36	21	24
VIP Boardroom	4.7 x 3.4	3.1	16	-	-	-	-	-	8	-
Business Centre	4 x 5	3.1	20	-	-	-	-	-	8	-
Royal Poinciana	17 x 25	3.4	425	300	220	176	310	204	-	58
Waratah	6 x 5	3.1	30	-	-	-	25	9	12	-
Boronia	7 x 5	3.1	35	-	-	-	30	18	18	15
Cypress I & II	-	3.1	395	200	110	80	135	93	60	51
Cypress I	11 x 9	3.1	99	70	40	32	50	32	21	21
Cypress II	11.8 x 8.3	3.1	94	120	70	46	80	48	30	24
The Boardroom	13 x 5	3.1	65	-	-	-	-	-	16	-
Undercover Tennis Courts	36 x 36	-	1500	1800	640	512	-	-	-	-
Poolside	-	-	-	1000	450	-	-	-	-	-
The Hub	6.5 x 14	3.0	91	60	40	32	48	36	21	24

LEVEL 1





RACV CITY CLUB
 501 Bourke Street
 Melbourne, Victoria 3000
 Telephone: 1300 139 059
conferencesandevents@racv.com.au

RACV CAPE SCHANCK RESORT
 Trent Jones Drive (via Boneo Road)
 Cape Schanck, Victoria 3939
 Telephone: 03 5950 8000
capeschanck_conference@racv.com.au

RACV NOOSA RESORT
 94 Noosa Drive
 Noosa Heads, Queensland 4567
 Telephone: 07 5341 6309
eventsnoosa@racv.com.au

RACV HEALESVILLE COUNTRY CLUB & RESORT
 122 Healesville-Kinglake Road,
 Healesville, Victoria 3777
 Telephone: 03 5969 9462
healesvilleevents@racv.com.au

RACV GOLDFIELDS RESORT
 1500 Midland Highway,
 Creswick, Victoria 3363
 Telephone: 03 5345 9600
events_goldfields@racv.com.au

RACV ROYAL PINES RESORT
 Ross Street, Benowa,
 Gold Coast, Queensland 4217
 Telephone: +61 7 5597 8700
royalpines_sales@racv.com.au

RACV TORQUAY RESORT
 1 Great Ocean Road,
 Torquay, Victoria 3228
 Telephone: 03 5261 1600
events_torquay@racv.com.au

RACV INVERLOCH RESORT
 70 Cape Paterson-Inverloch Road,
 Inverloch, Victoria 3996
 Telephone: 03 5674 0000
inverlochevents@racv.com.au

RACV HOBART HOTEL
 154-156 Collins Street,
 Hobart, TAS 7000
 Telephone: 03 6270 8600
events_hobart@racv.com.au

Discover our nine unique destinations at racv.com.au/venues
 For multi-property enquiries email meet@racv.com.au

Melbourne CBD | Yarra Valley | Torquay | Mornington Peninsula
 Goldfields | Inverloch | Noosa | Gold Coast | Hobart

